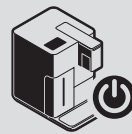







## YOU-RISTA (+MILK MASTER)

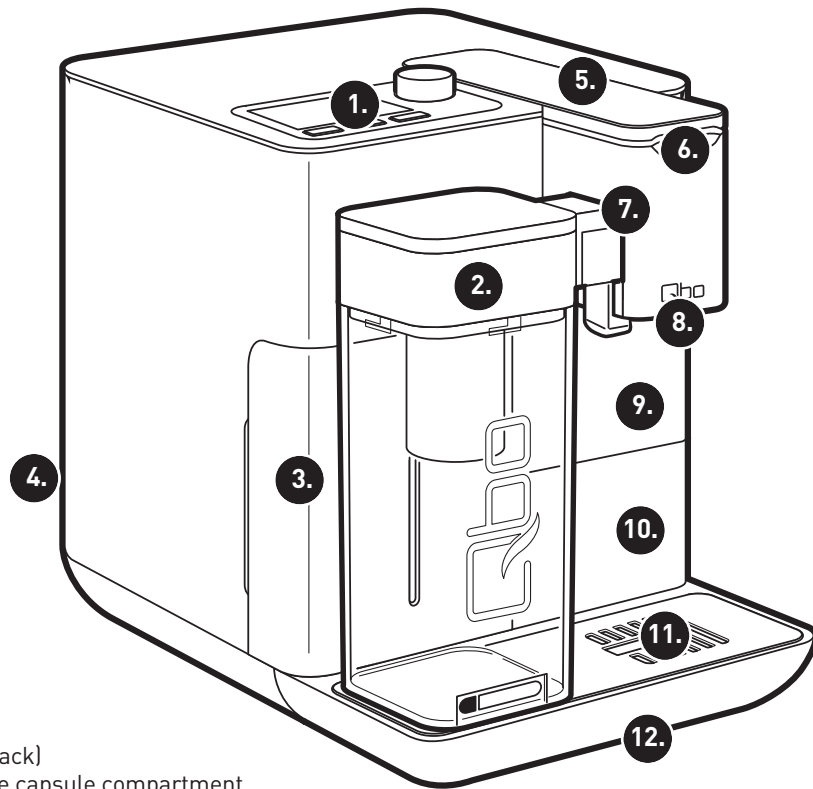


Machine and  
control panel

Getting started

### You will need:

-  about 5 minutes
-  1 container (at least 500 ml)
-  fresh, cold water



1. Control panel
2. MILK MASTER\*
3. Water tank
4. Mains plug (on the back)
5. Lever for opening the capsule compartment
6. Capsule compartment
7. Panel (connection socket for the MILK MASTER\*)
8. Coffee spout
9. Used capsule container
10. Pull-out tray for small cups
11. Drip grid
12. Drip tray

\*  
You can get the MILK MASTER as a set with the YOU-RISTA+MILK MASTER or separately.

## Wi-Fi indicator light



(Off) Wi-Fi deactivated.



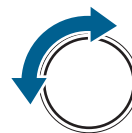
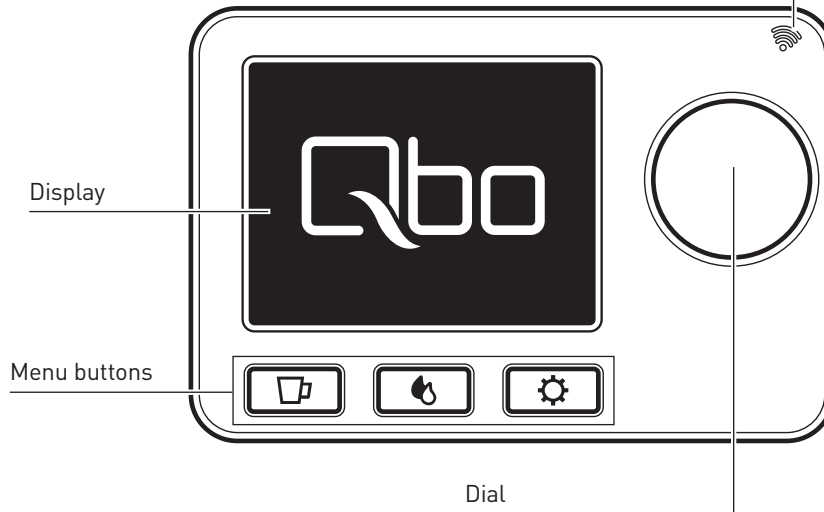
(Flashing) Wi-Fi activated. Download the Qbo App.



[The basic functions of the machine can also be used without the Qbo App.]



(Lit up) Machine connected to Wi-Fi.



▷ **Turn the dial** to switch between the different menu items displayed.



▷ **Press the dial** to select a menu item or to start the brewing process.

"Apple and the Apple logo are trademarks of Apple Inc., registered in the U.S. and other countries. The App Store is a service brand of Apple Inc."

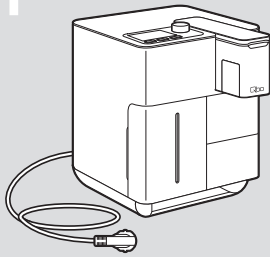
"Android, Google Play™ and the Google Play™ logo are trademarks of Google Inc."

# GETTING STARTED



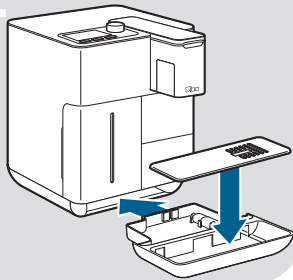
Read the safety warnings carefully before using and only use the product as described in these instructions to avoid accidental injury or damage.

1



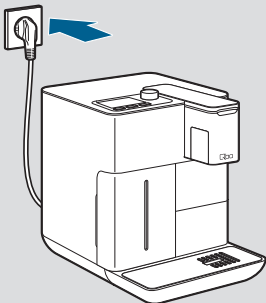
- ▷ Place the machine on a solid, level surface that is resistant to water and heat.
- ▷ Remove all packaging material.

2



- ▷ Slide the drip tray into the machine as illustrated as far as it will go.
- ▷ Place the drip grid on the drip tray.

3



- ▷ Insert the plug into an easily accessible wall socket.

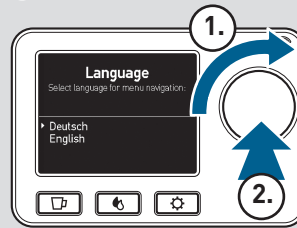
**i** The mains cord on the bottom of the machine is approx. 80 cm long. Wrap it underneath until it is the required length.

4



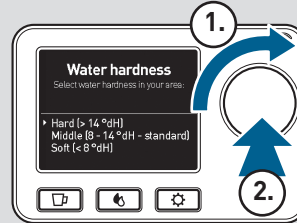
- ▷ Press the dial to switch on the machine.

5



- ▷ Select your preferred language (1.).
- ▷ Press the dial (2.) to confirm your selection.

6



- ▷ Select the hardness of the water in your area (1.).

**i** You can find out the hardness of your water by inquiring at a local water company. If you cannot find out the hardness of your water, select the **Middle (8-14°dH standard)** setting.

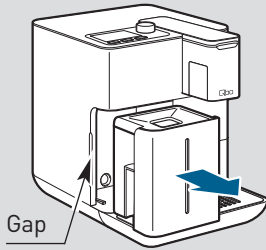
- ▷ Press the dial (2.).

7



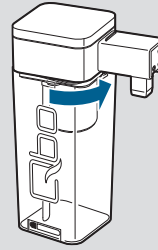
- ▷ Press the dial to confirm **Next**.

8



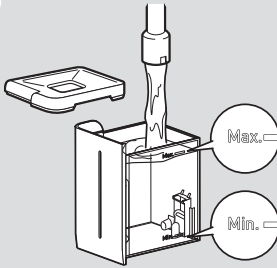
- ▷ Reach into the small gap on the side of the water tank and pull out the water tank.

12



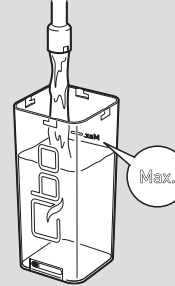
- ▷ Turn the motor unit of the MILK MASTER counter-clockwise as far as it will go.
- ▷ Remove the motor unit.

9



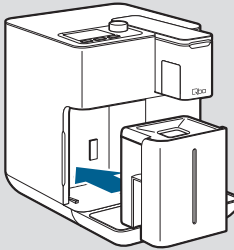
- ▷ Fill the water tank with fresh, clear tap water up to the max. mark.

13



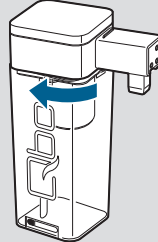
- ▷ Fill the MILK MASTER with water up to the max. mark.

10



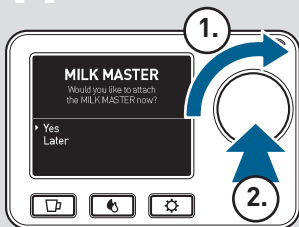
- ▷ Slide the water tank back into the machine as far as it will go.

14



- ▷ Place the motor unit back on the milk carafe.
- ▷ Turn the motor unit clockwise as far as it will go.

11

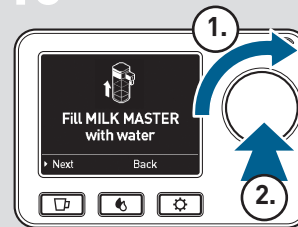


- ▷ If you have the MILK MASTER, select **Yes** (1.) and press the dial (2.). **Proceed with step 12.**

**i** For reasons of hygiene, the MILK MASTER always needs to be rinsed as well!

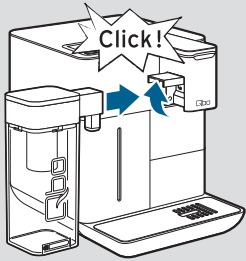
- ▷ If you do not have the MILK MASTER, select **Later** (1.) and press the dial (2.). **Proceed with step 17.**

15



- ▷ Select **Next** (1.).
- ▷ Press the dial (2.).

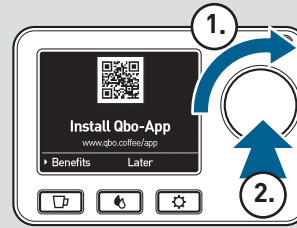
16



- ▷ Fold up the panel for the MILK MASTER connection socket as far as it will go and hold it there.
- ▷ Insert the MILK MASTER into the connection socket as illustrated as far as it will go. You should hear and feel the panel click into place in the MILK MASTER.

**i** The MILK MASTER must be pushed in all the way. Only then will the machine automatically proceed to the next step.

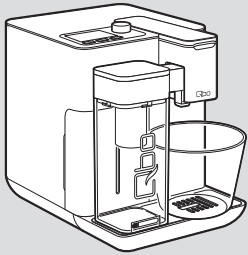
19



The Qbo machine can now be connected to Wi-Fi (see “Connecting to Wi-Fi” in the manual).

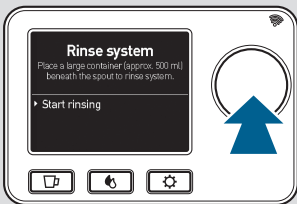
- ▷ Select **Benefits** to see what is in store for you if you connect the machine to Wi-Fi. Follow the instructions as displayed.
- ▷ Select **Later** if you would like to connect the machine to Wi-Fi at a later time. You have completed the initial necessary steps and the machine is ready for use. The machine switches to the drinks menu.

17



- ▷ Place a large container (min. 500 ml) under the coffee spout. Remember that the rinsing cycle cannot be interrupted!

18



- ▷ Press the dial to start the rinsing cycle. Progress bars will show you how long the rinsing cycle has left.



As soon as “Your Qbo machine is ready for use” is displayed, the rinsing cycle is complete and the machine is good to go.

- ▷ Press the dial or wait about 3 seconds.