




YOU-RISTA



Reset to
factory settings

You will need:

 about 3 minutes

RESET TO FACTORY SETTINGS

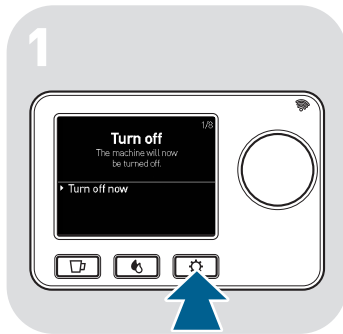


Read the safety warnings carefully before using and only use the product as described in these instructions to avoid accidental injury or damage.

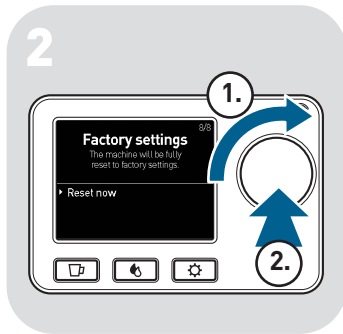
Why do I need to reset the machine to factory settings?

If the information displayed is incorrect or if the YOU-RISTA is not working properly, the machine should be reset to factory settings.

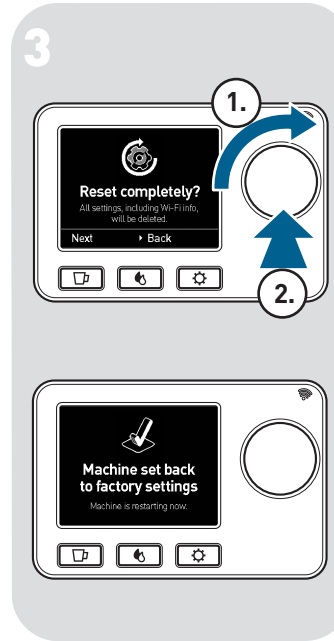
WARNING! Doing so will delete all settings you have made and all information, such as drinks saved to your machine and Wi-Fi information.




▷ Press the settings menu button .



▷ Select the menu option **Factory settings** (1.).
▷ Press the dial (2.) to select **Reset now**.



▷ Press the dial (2.) to confirm your selection.
The settings menu button  will flash. The display will show "Setting machine back to factory settings".

Once "Machine set back to factory settings" is displayed, the machine will restart after a few seconds. The machine will only be fully reset after it has restarted.

The firmware version that was last installed will be restored. The initial installation process (language settings, etc.) will start automatically (see manual "Getting started").